

**Industrial L2+ Managed Gigabit/
10 Gigabit Ethernet Switch**

IGS-5225 Series

Quick Installation Guide

Table of Contents

1. Package Contents	3
2. Requirements	4
3. Wiring DC Power Inputs	5
4. Terminal Setup	7
5. Logon to Console.....	8
6. Configuring IP Address via Console	9
7. Starting Web Management	11
8. Saving Configuration via Web	14
9. Recovering Back to Default Configuration.....	15
10. Customer Support.....	16

1. Package Contents

Thank you for purchasing PLANET Industrial L2+ Managed Gigabit/10 Gigabit Ethernet Switch. The description of this model is shown below:

IGS-5225-16T4S	Industrial L2+ 16-port 10/100/1000T + 4-port 100/1000X SFP Managed Ethernet Switch (-40~75 degrees C)
IGS-5225-20T4C2X	Industrial L2+ 20-port 10/100/1000T + 4-port TP/SFP Combo + 2-port 10G SFP+ Managed Ethernet Switch (-40~75 degrees C)
IGS-5225-16P4S	Industrial L2+ 16-port 10/100/1000T 802.3at PoE + 4-port 100/1000X SFP Managed Switch (-40~75 degrees C)
IGS-5225-24P4S	Industrial L2+ 24-port 10/100/1000T 802.3at PoE + 4-port shared 100/1000X SFP Managed Switch (-40~75 degrees C)

“**Industrial Managed Switch**” is used as an alternative name in this Quick Installation Guide.

Open the box of the Industrial Managed Switch and carefully unpack it.

The box should contain the following items:

- The Managed Switch
- Quick Installation Guide
- RJ45 to RS232 Cable
- Rubber Feet
- Two Rack-mounting Brackets with Attachment Screws
- Power Cord
- SFP Dust-proof Caps
- RJ45 Dust-proof Caps

	RJ45 Dust-proof Caps	SFP Dust-proof Caps
IGS-5225-16T4S	17	4
IGS-5225-20T4C2X	25	6
IGS-5225-16P4S	17	4
IGS-5225-24P4S	25	4

If any item is found missing or damaged, please contact your local reseller for replacement.

2. Requirements

- Workstations running Windows XP/2003/Vista/7/8/2008/10, MAC OS X or later, Linux, UNIX, or other platforms are compatible with TCP/IP Protocols.
- Workstations are installed with Ethernet NIC (Network Interface Card)
- **Serial Port Connection** (Terminal)
 - The above Workstations come with COM Port (DB9) or USB-to-RS232 converter.
 - The above Workstations have been installed with terminal emulator, such as Hyper Terminal included in Windows XP/2003, putty or tera term.
 - Serial cable -- one end is attached to the RS232 serial port, while the other end to the console port of the Industrial Managed Switch.
- **Ethernet Port Connection**
 - Network cables -- Use standard network (UTP) cables with RJ45 connectors.
 - The above PC is installed with Web browser and JAVA runtime environment plug-in.



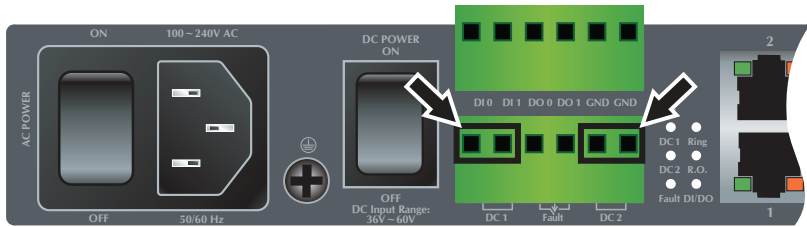
Note

It is recommended to use Internet Explore 8.0 or above to access the Industrial Managed Switch. If the Web interface of the Industrial Managed Switch is not accessible, please turn off the anti-virus software or firewall and then try it again.

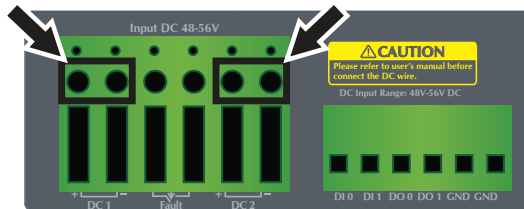
3. Wiring DC Power Inputs

The 6-contact terminal block connector on the rear panel of Industrial Managed Switch is used for two DC redundant power input. Please follow the steps below to insert the power wires.

1. Insert positive/negative DC power wires into contacts 1 and 2 for DC POWER 1, or 5 and 6 for DC POWER 2.

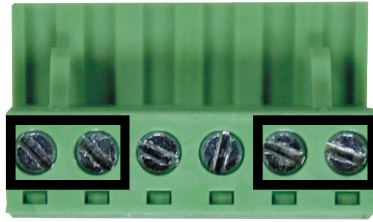


IGS-5225-20T4C2X and IGS-5225-16T4S power wiring



IGS-5225-24P4S and IGS-5225-16P4S power wiring

2. Tighten the wire-clamp screws for preventing the wires from loosening.



1 2 3 4 5 6
 V1+ V1- V2+ V2-
 Power 1 Power 2

	Positive (+) Pin	Negative (-) Pin
IGS-5225-16T4S	Pin 1/5	Pin 2/6
IGS-5225-20T4C2X	Pin 1/5	Pin 2/6
IGS-5225-16P4S	Pin 1/5	Pin 2/6
IGS-5225-24P4S	Pin 1/5	Pin 2/6



Note

The wire gauge for the terminal block should be in the range between **12** and **24 AWG**.

4. Terminal Setup

To configure the system, connect a serial cable to a **COM port** on a PC or notebook computer and to RJ45 type of serial port of the Industrial Managed Switch.

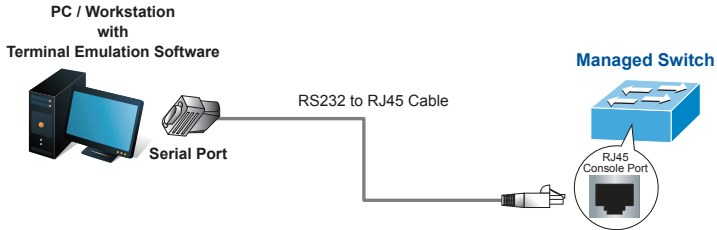


Figure 4-1 Industrial Managed Switch Console Connectivity

A terminal program is required to make the software connection to the Industrial Managed Switch.

1. Run terminal program on the OS.
2. When the following screen appears, make sure that the COM port should be configured as:

- Baud: 115200
- Data bits: 8
- Parity: None
- Stop bits: 1
- Flow control: None

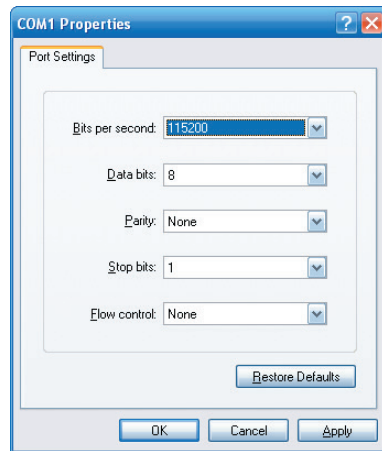


Figure 4-2 COM Port Configuration

5. Logon to Console

Once the terminal is connected to the device, power on the Industrial Managed Switch and the terminal will display "running testing procedures".

Then, the following message asks to log-in user name and password. The factory default user name and password are shown as follows and the login screen in Figure 5-1 appears.

```
Username: admin  
Password: admin
```

```
Press ENTER to get started  
Username: admin  
Password:  
IGS-5225-Series#
```

Figure 5-1: Industrial Managed Switch Console Login Screen

The user can now enter commands to manage the Industrial Managed Switch. For a detailed description of the commands, please refer to the following chapters.



Note

1. For security reason, please change and memorize the new password after this first setup.
2. Only accept command in lowercase letter under console interface.

6. Configuring IP Address via Console

The Industrial Managed Switch is shipped with default IP address shown below.

```
IP Address: 192.168.0.100  
Subnet Mask: 255.255.255.0
```

To check the current IP address or modify a new IP address for the Switch, please use the procedure as follows:

■ Show the current IP Address

1. At the “#” prompt, enter “**show ip interface brief**”.
2. The screen displays the current IP address as shown in Figure 6-1.

```
IGS-5225-Series# show ip interface brief  
Vlan Address Method Status  
-----  
1 192.168.0.100/24 Manual UP  
IGS-5225-Series#
```

Figure 6-1: IP Information Screen

■ Configuring IP Address

3. At the “#” prompt, enter the following command and press <Enter> as shown in Figure 6-2.

```
IGS-5225-Series # configure terminal  
IGS-5225-Series (config) # interface vlan 1  
IGS-5225-Series (config-if-vlan) # ip address 192.168.1.100 255.255.255.0
```

The previous command would apply the following settings for the Industrial Managed Switch.

```
IP Address: 192.168.1.100  
Subnet Mask: 255.255.255.0
```

```
IGS-5225-Series# configure terminal  
IGS-5225-Series(config)# interface vlan 1  
IGS-5225-Series(config-if-vlan)# ip address 192.168.1.100 255.255.255.0  
IGS-5225-Series(config-if-vlan)#
```

Figure 6-2: Configuring IP Address Screen

4. Repeat step 1 to check if the IP address has changed.

■ **Store the current switch configuration**

5. At the “#” prompt, enter the following command and press **<Enter>**.

```
# copy running-config startup-config
```

```
IGS-5225-Series# copy running-config startup-config
Building configuration...
% Saving 3514 bytes to flash:startup-config
IGS-5225-Series#
```

Figure 6-3: Saving Current Configuration Command Screen

If the IP is successfully configured, the Industrial Managed Switch will apply the new IP address setting immediately. You can access the Web interface of the Industrial Managed Switch through the new IP address.



Note

If you are not familiar with the console command or the related parameter, enter “**help**” anytime in console to get the help description.

7. Starting Web Management

The following shows how to start up the **Web Management** of the Industrial Managed Switch. Note the Industrial Managed Switch is configured through an Ethernet connection. Please make sure the manager PC must be set to the same **IP subnet address**.

For example, the default IP address of the Industrial Managed Switch is **192.168.0.100**, then the manager PC should be set to **192.168.0.x** (where x is a number between 1 and 254, except 100), and the default subnet mask is 255.255.255.0.

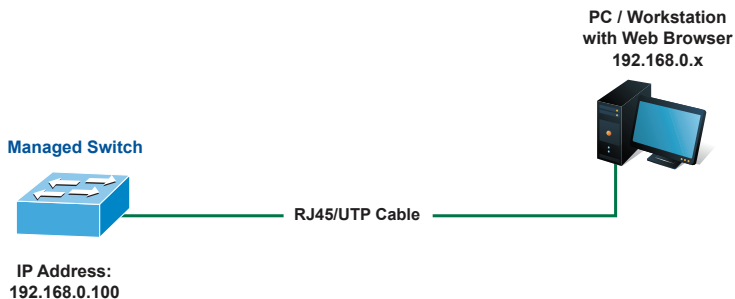


Figure 7-1: IP Management Diagram

Logging in to the Industrial Managed Switch

1. Use Internet Explorer 8.0 or above Web browser and enter IP address **http://192.168.0.100** (the factory default IP address or the one that you have just changed in console) to access the Web interface.
2. When the following dialog box appears, please enter the default user name and password "**admin**" (or the password you have changed via console). The login screen in Figure 7-2 appears.

Default Username: **admin**
Default Password: **admin**

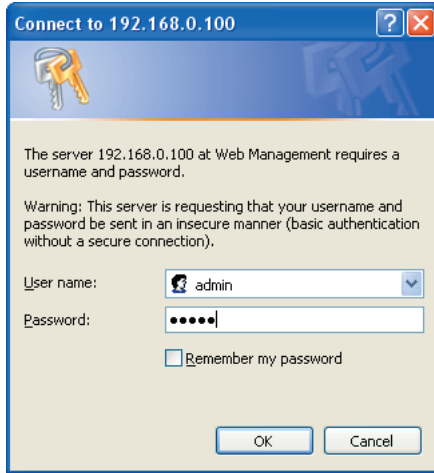


Figure 7-2: Login Screen

3. After entering the password, the main screen appears as Figure 7-3 shows.



Figure 7-3: Web Main Screen of Industrial Managed Switch

The Switch Menu on the left of the Web page lets you access all the commands and statistics the Industrial Managed Switch provides.

- ▶ System
- ▶ SNMP
- ▶ Port Management
- ▶ Link Aggregation
- ▶ VLANs
- ▶ Spanning Tree
- ▶ Multicast
- ▶ QoS
- ▶ Access Control List
- ▶ Authentication
- ▶ Security
- ▶ MAC Address Table
- ▶ LLDP
- ▶ Diagnostics
- ▶ Loop Protection
- ▶ RMON
- ▶ PTP
- ▶ Ring

Figure 7-4: Switch Menu



Note

If you are not familiar with Switch functions or the related parameter, press **“Help icon”** anytime on the Web page to get the help description.

Now, you can use the Web management interface to continue the Switch management or manage the Switch by console interface.

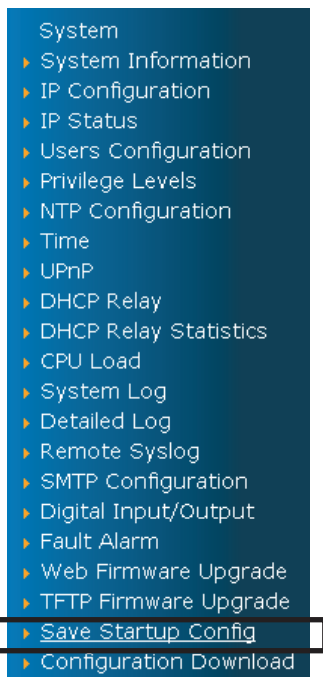
Please refer to the user’s manual for more.

8. Saving Configuration via Web

In the Industrial Managed Switch, the running configuration file stores in the RAM. In the current version, the running configuration sequence of **running-config** can be saved from the RAM to FLASH by executing save startup config command, so that the running configuration sequence becomes the startup configuration file, which is called configuration save.

To save all applied changes and set the current configuration as a startup configuration, the startup-configuration file will be loaded automatically across a system reboot.

1. Click **System, Save Startup Config**.



2. Press the **"Save Configuration"** button.



9. Recovering Back to Default Configuration

■ IP address has been changed or admin password has been forgotten –

To reset the IP address to the default IP address “**192.168.0.100**” or reset the login password to default value, press the hardware **reset button** on the rear panel for about **10 seconds**. After the device is rebooted, you can login the management Web interface within the same subnet of 192.168.0.xx.

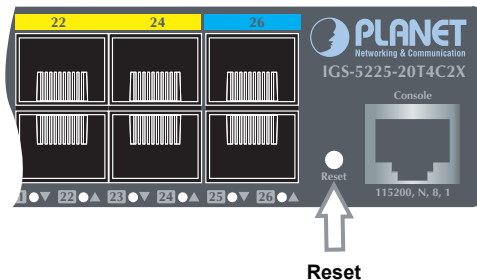


Figure 9-1: IGS-5225-20T4C2X Reset Button

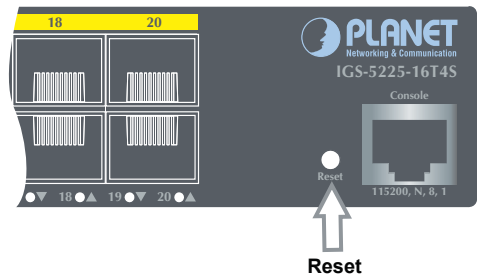


Figure 9-2: IGS-5225-16T4S Reset Button

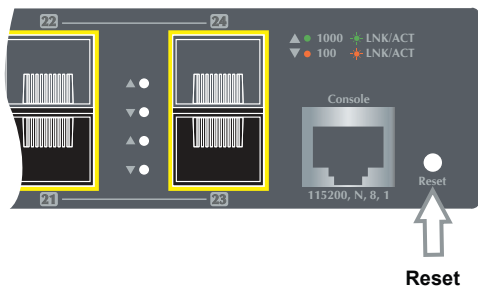


Figure 9-3: IGS-5225-16P4S/24P4S Reset Button

10. Customer Support

Thank you for purchasing PLANET products. You can browse our online FAQ resource and User's Manual on PLANET Web site first to check if it could solve your issue. If you need more support information, please contact PLANET switch support team.

PLANET online FAQ:

<http://www.planet.com.tw/en/support/faq.php?type=1>

Switch support team mail address:

support_switch@planet.com.tw

Industrial User's Manual:

<http://www.planet.com.tw/en/support/download.php?type1=22153&model=&type=3>



(Please select your switch model name from the drop-down menu of Product Models.)

Copyright © PLANET Technology Corp. 2016.

Contents are subject to revision without prior notice.

PLANET is a registered trademark of PLANET Technology Corp. All other trademarks belong to their respective owners.